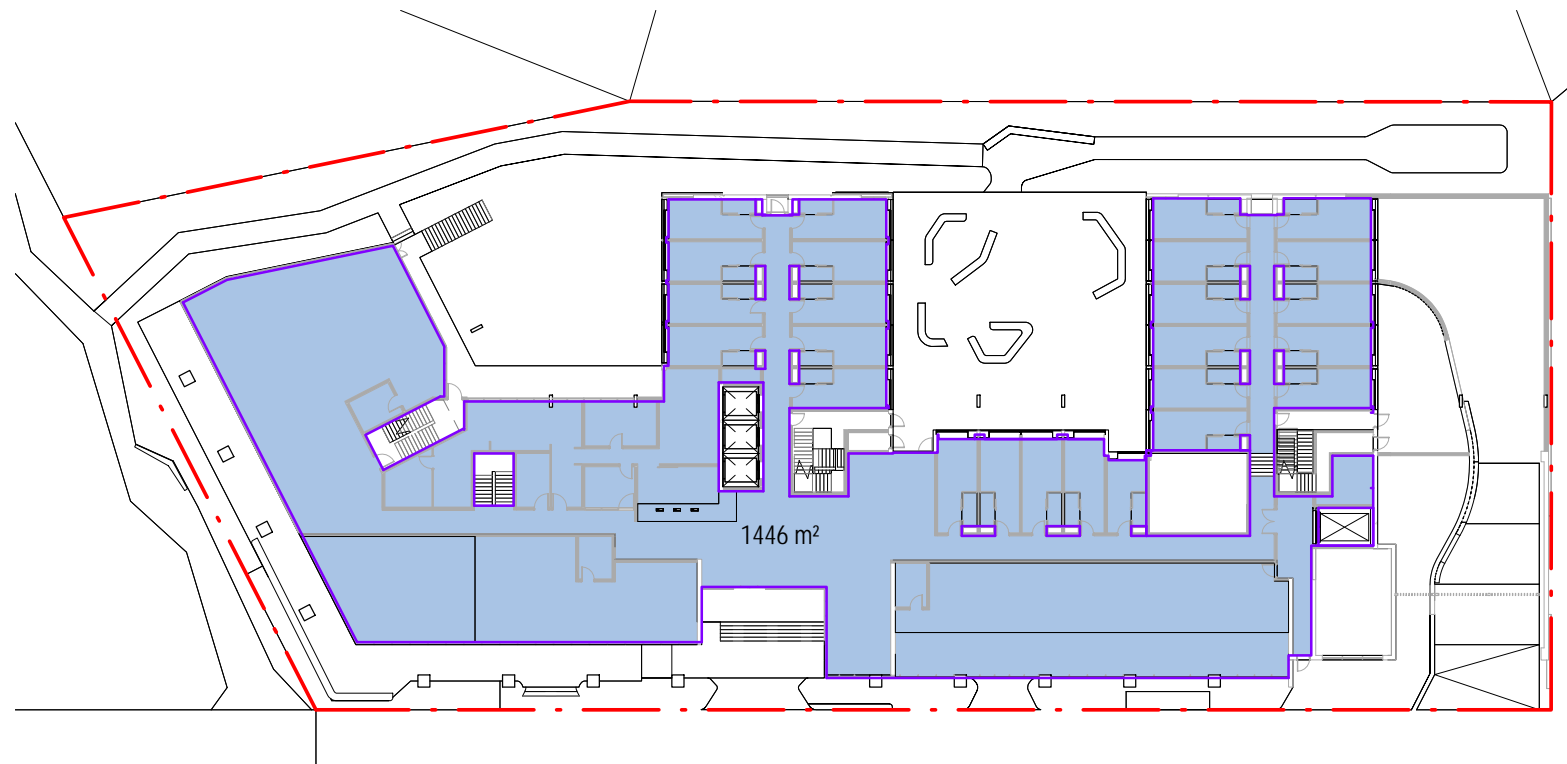


4 PLAN - GFA B1
1 : 500



2 GFA - Ground Floor
1 : 500



3 GFA - Level 1
1 : 500



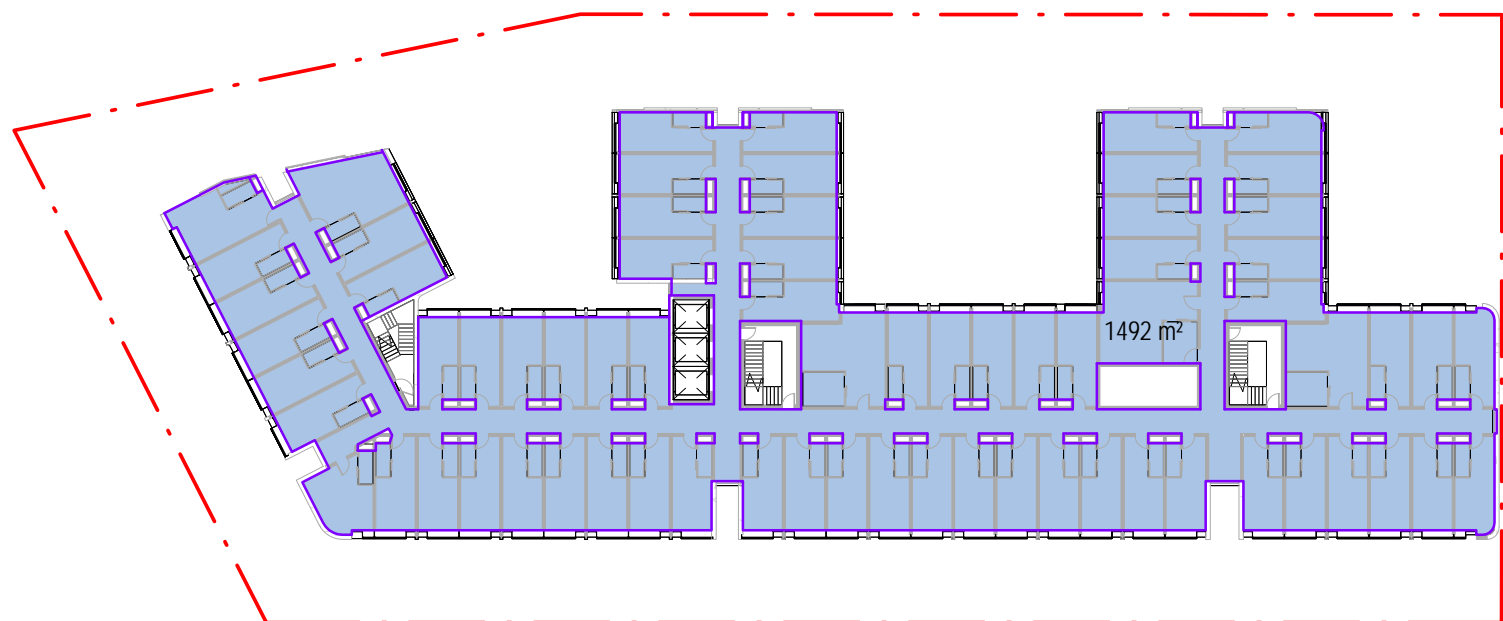
1 PLAN - GFA L2
1 : 500



8 PLAN - GFA L3
1 : 500



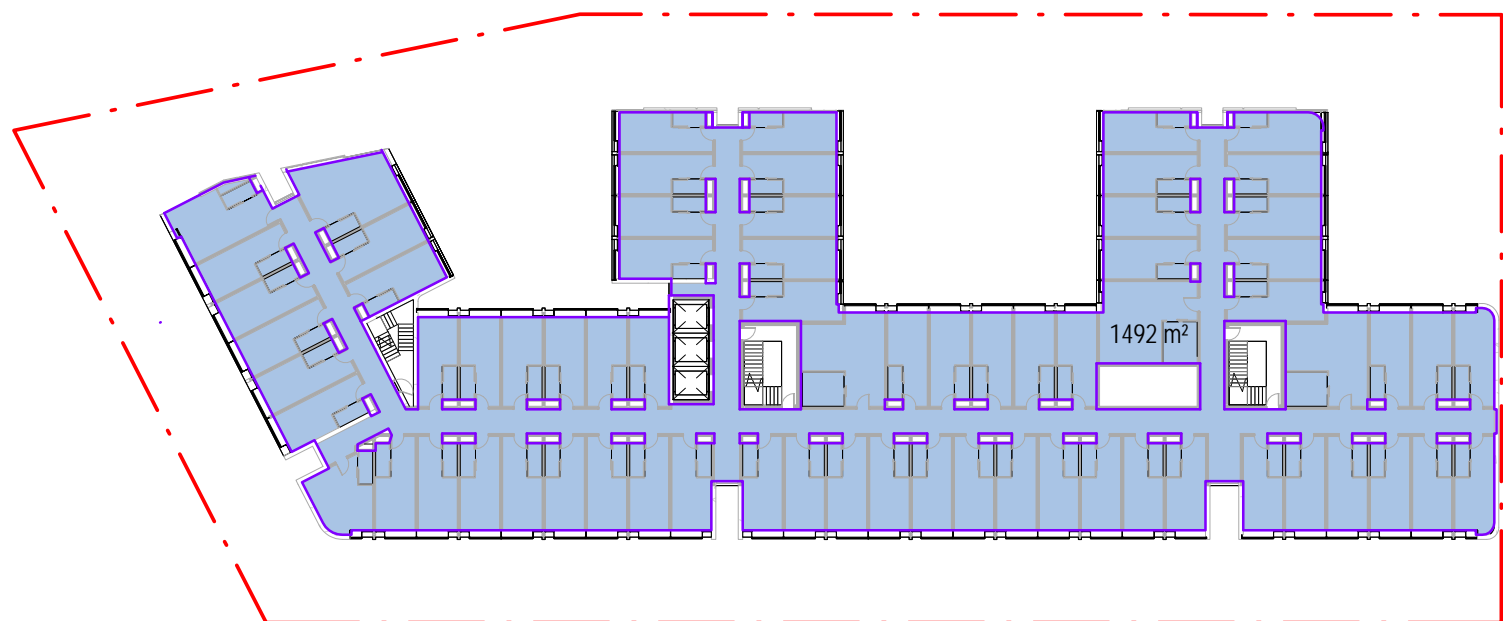
5 PLAN - GFA L4
1 : 500



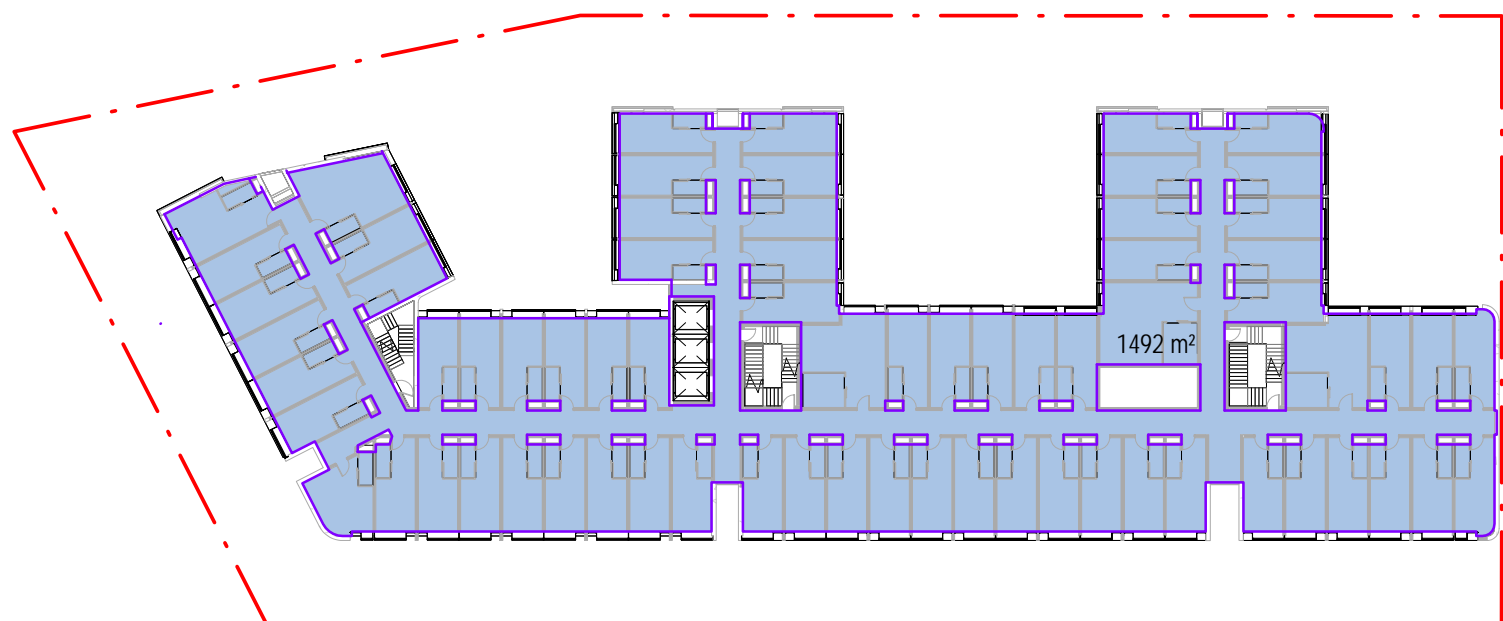
9 PLAN - GFA L5
1 : 500



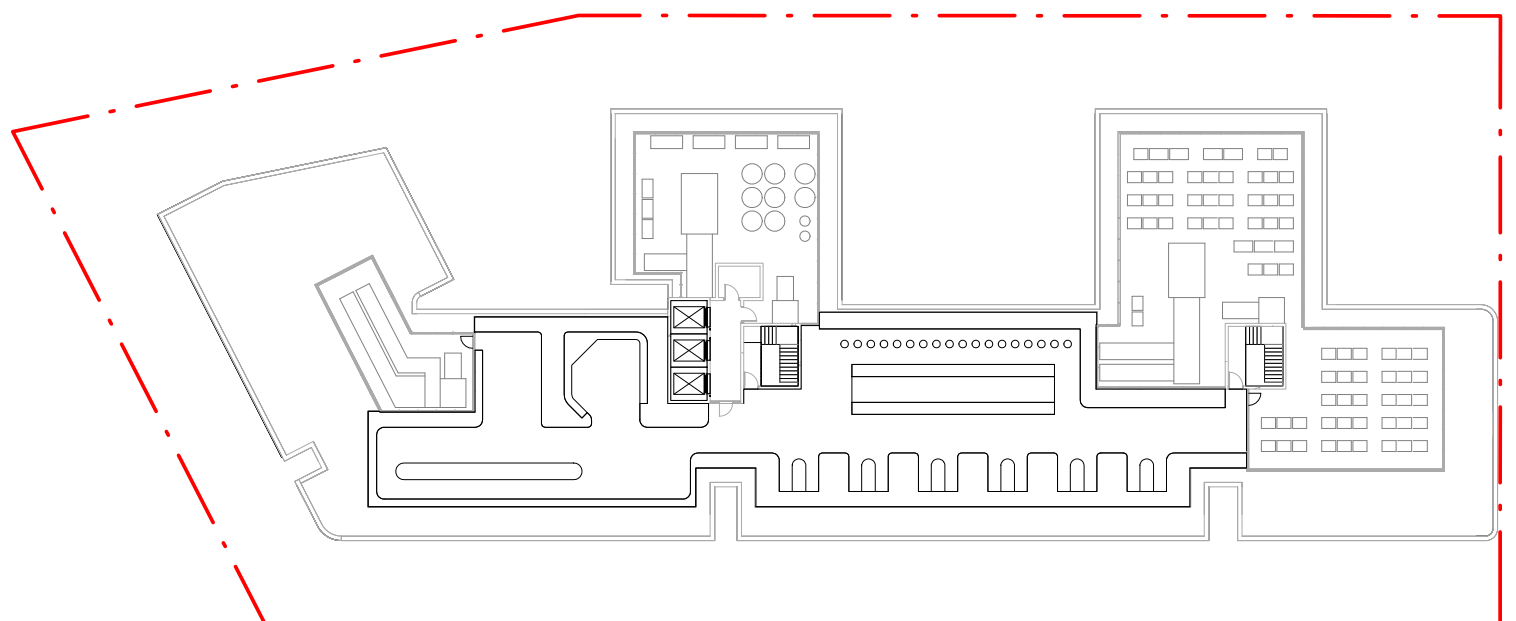
6 PLAN - GFA L6
1 : 500



10 PLAN - GFA L7
1 : 500



7 PLAN - GFA L8
1 : 500



11 PLAN - GFA ATTIC
1 : 500

GFA DEFINITION

Gross Floor Area means the sum of the floor area of each floor of a building measured from the internal face of external walls, or from the internal face of walls separating the building from any other building, measured at a height of 1.4 metres above the floor, and

includes—

- (a) the area of a mezzanine, and
- (b) habitable rooms in a basement or an attic, and
- (c) any shop, auditorium, cinema, and the like, in a basement or attic,

but excludes—

- (d) any area for common vertical circulation, such as lifts and stairs, and
- (e) any basement—
- (i) storage, and
- (ii) vehicular access, loading areas, garbage and services, and
- (f) plant rooms, lift towers and other areas used exclusively for mechanical services or ducting, and
- (g) car parking to meet any requirements of the consent authority (including access to that car parking), and
- (h) any space used for the loading or unloading of goods (including access to it), and
- (i) terraces and balconies with outer walls less than 1.4 metres high, and
- (j) voids above a floor at the level of a storey or storey above.

Site 177 - 197 Anzac Pde
SITE AREA = 3541m²

GFA Totals
Total GFA 14,958m²
FSR Achieved 4.22 : 1

Area Schedule (GFA)	
Level	Area
B1	917 m²
G	1446 m²
L1	1711 m²
L2	1712 m²
L3	1712 m²
L4	1492 m²
L5	1492 m²
L6	1492 m²
L7	1492 m²
L8	1492 m²
TOTAL GFA	14958 m²

SECTION 96
DEVELOPMENT APPLICATION
DA/20/2021/C
Randwick City Council
27 September 2022
Records Received